

Schacht Premium Pocket Frames

PRODUCT OVERVIEW AND DETAILED DRAWINGS



Schacht Premium Pocket Frame Overview

What It Is:

An Exactingly Engineered and Built Pocket Door Frame that delivers the quality that your projects deserve.

Benefits To Your Team:

Simple to Install

Exactingly Engineered

High-End Architectural Track Option from Hafele



Pocket Frame Details

Built for 2x6 and 2x4 Framing exclusively for 1 ¾” Doors

5 1/2” and 3 1/2” Pocket Frame Widths available

Available for singles and pair units

Track Options: Hafele Sildo 80 and 120 available with and without soft close

3-4 Week Lead Time and Ships Mostly Assembled

Pocket Fully Assembled

Track and Header Shipped in Pocket Frame with Track held in by Temporary Screws

Pan head screws provided to install the frame to the flat subfloor

Pocket Frame Construction Details Overview

Our Frame is Built From 100% Solid and Edge Glued Poplar

Pocket Door Members are 13/16" in 2x6 construction and 5/8" thick in 2x4 construction and can accommodate 1/2" or 5/8" Drywall

Recessed joinery ensures tight fit and finish and ensures drywall sits flush on cross members

Min/Max Sizes

Minimum Size: 2'0"x6'0" single

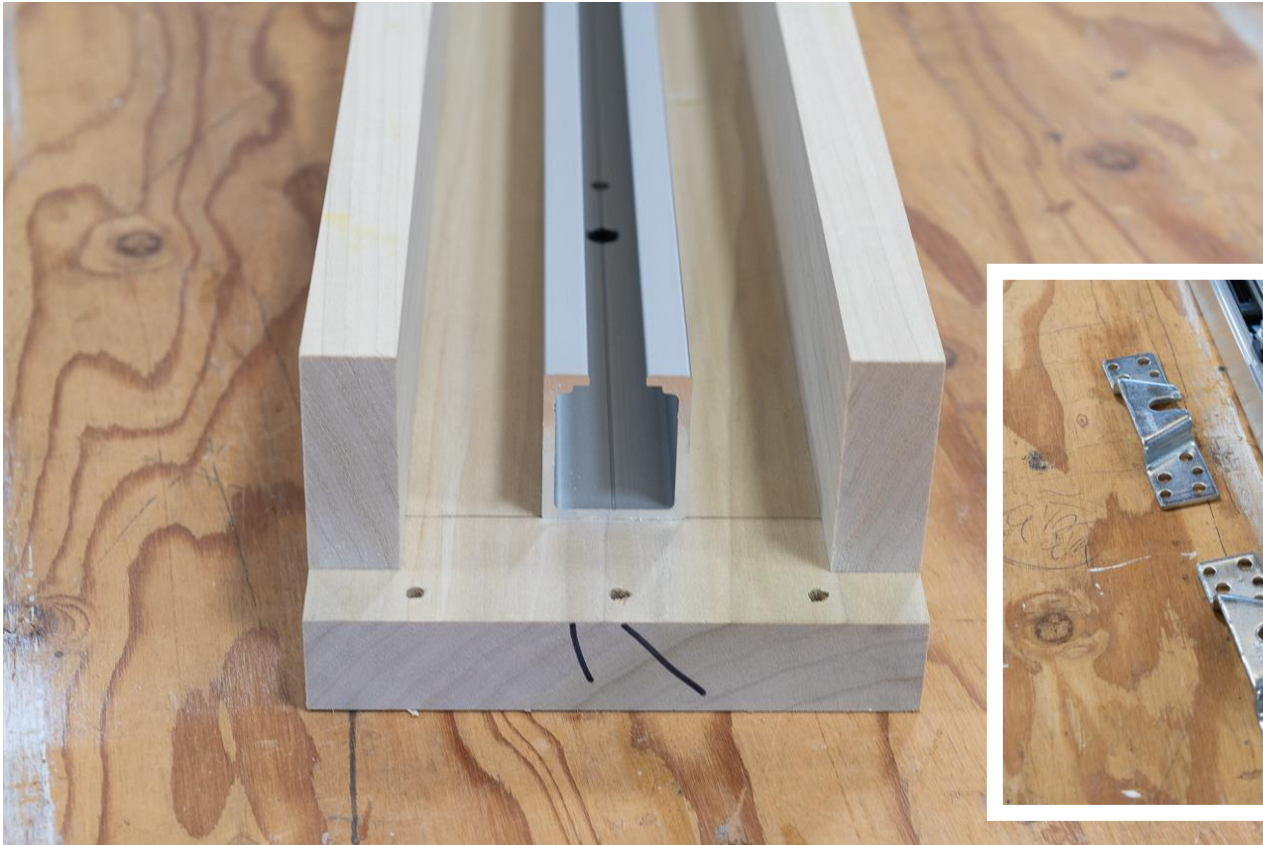
Maximum Sizes: 52"x10'0" single, 104"x10'0" pair

Solid Poplar and Edge Glued Poplar Componentry



All components are 13/16" thick and can accommodate 5/8" or 1/2" drywall conditions

Standard Track Options



Hafele Slido 80 and 120

Both available with and without soft close/soft open

Precise Joinery – 100% Pocket Screwed



Recessed joinery ensures tight fit and finish and ensures drywall sits flush on cross members

Pre-Drilled for Easy Final Assembly



Unit Ships Complete Easy Final Assembly



Easy to Order

By Door Size:

Single: RO= 2 x Door Width + 2-1/2"

Pair: RO= 4 x Door Width + 3"

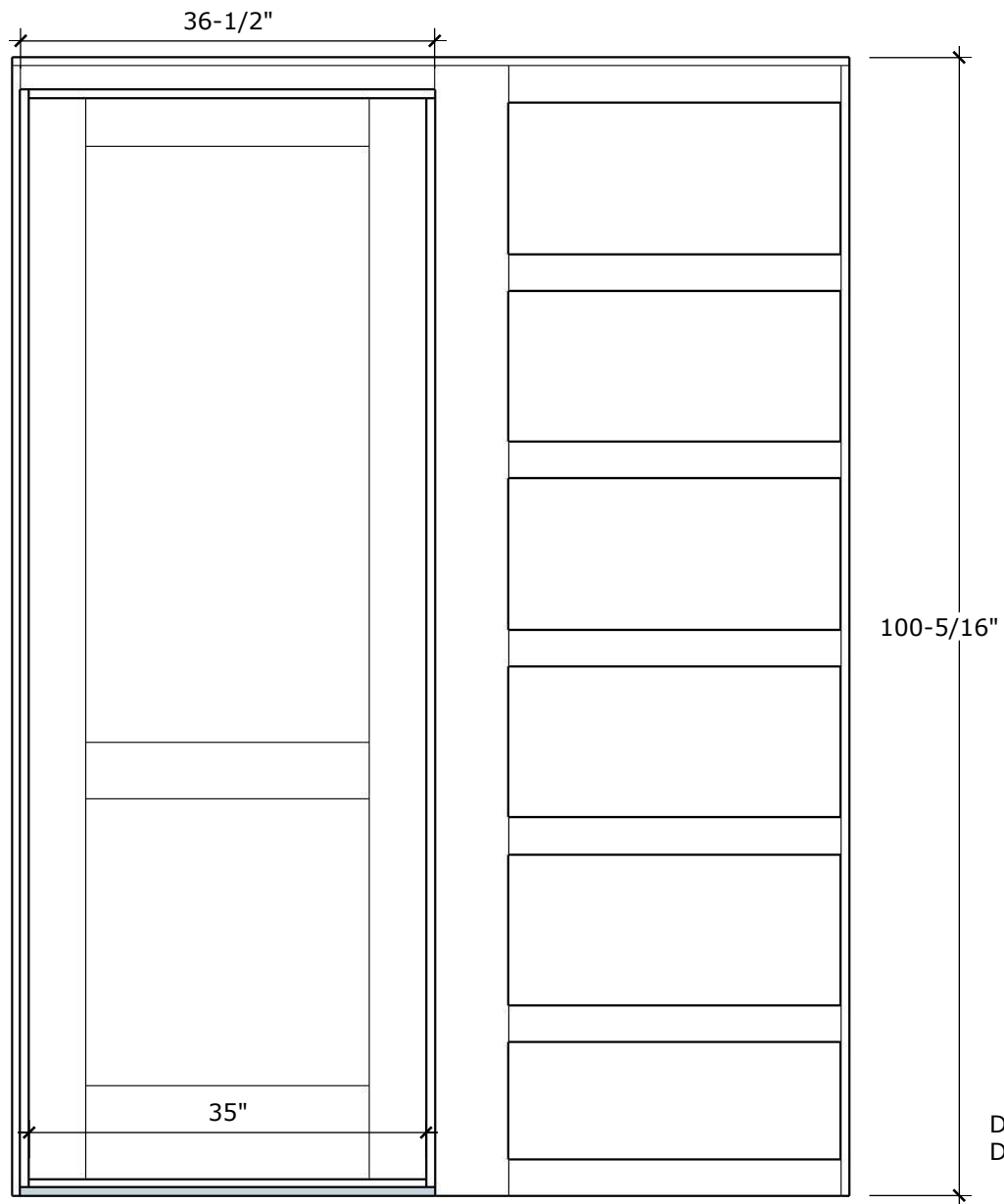
Height: RO= Door Height + 5"

Ask your sales rep for a demonstration
or for a quote today.

System Detail and Drawings

POCKET DOOR FRAME STANDARDS:

- ALL DOORS: 1-3/4" THICK
 - 2 OPTIONS OF WALL THICKNESS: 3-1/2" & 5-1/2"
 - STANDARD 3/4" THICK PAINT GRADE POPLAR JAMB MATERIAL ADDED AROUND POCKET FRAME
 - 1/4" REVEAL FROM FINISHED FRAME TO DOOR FRAME
 - ROUGH OPENING HEIGHT: HEIGHT OF DOOR + 5" (ASSUMING 3/4" FINISHED FLOOR)
 - HAFELE TRACK SYSTEM WILL HAVE 11/16" SHIM SPACE AT THE TOP OF UNIT
 - MAX WEIGHT FOR HAFELE TRACK SYSTEM: 264 POUNDS
 - DOOR WEIGHT CALCULATED USING 6 POUNDS PER SQ. FOOT
 - SINGLE UNITS:
 - FINISHED OPENING WILL BE 1" SMALLER THAN THE WIDTH OF DOOR LEAF
 - ROUGH OPENING WIDTH EQUALS THE WIDTH OF THE DOOR TIMES 2 PLUS 2-1/2" (3/8" SHIM SPACE EACH SIDE)
 - DOUBLE UNITS:
 - FINISHED OPENING WILL BE 2" SMALLER THAN THE WIDTH OF DOOR LEAF TIMES 2
 - ROUGH OPENING WIDTH EQUALS THE WIDTH OF THE DOOR TIMES 4 PLUS 3" (1/2" SHIM SPACE EACH SIDE)
- HAFELE HARDWARE:
- NO SOFT CLOSE: MINIMUM WIDTH: 20" - 940.83.005
 - SINGLE SOFT CLOSE: MINIMUM WIDTH: 20" - 940.83.006
 - DOUBLE SIDE SOFT CLOSE: MINIMUM WIDTH: 29-1/2" - 940.83.008

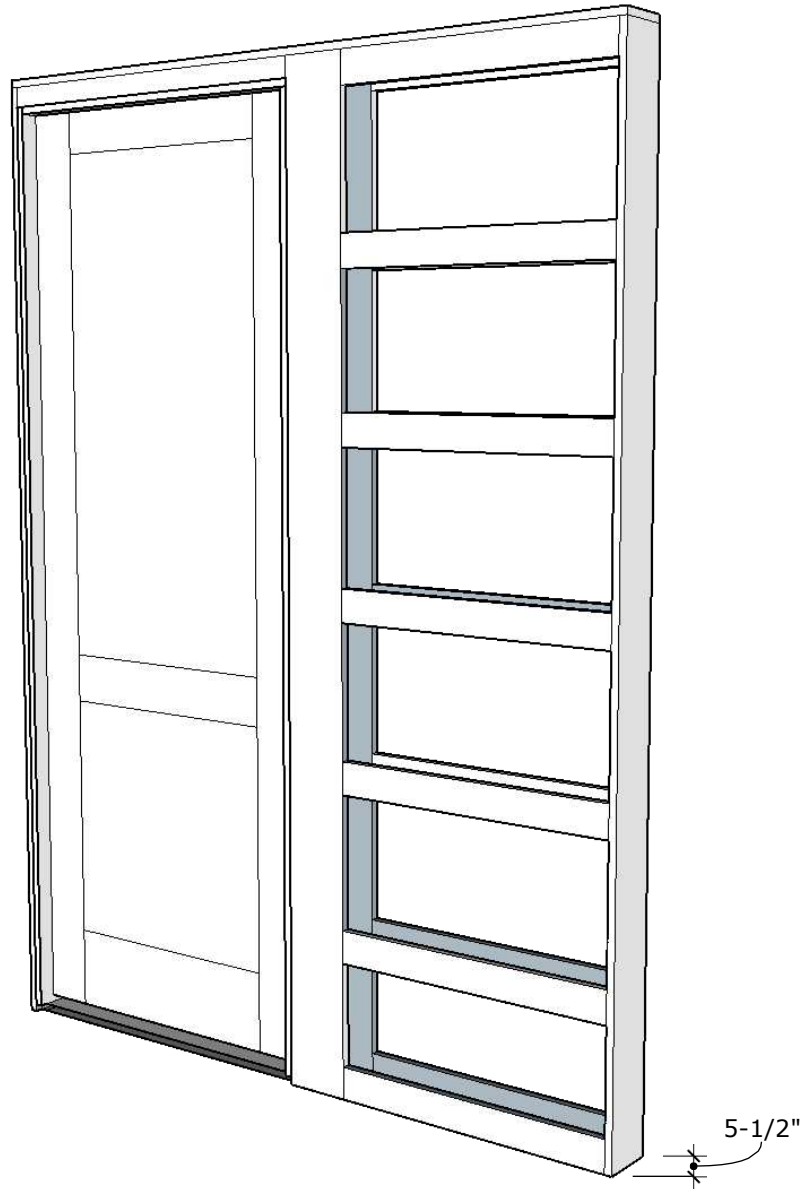


DRAWN BY: KK
DATE: 4/25/22



3'-0" X 8'-0" X 1-3/4" - 5-1/2" WALL
WITH POCKET DOOR STILE DOOR - 1" LARGER STILE

3'-0" x 8'-0"
5-1/2" WALL

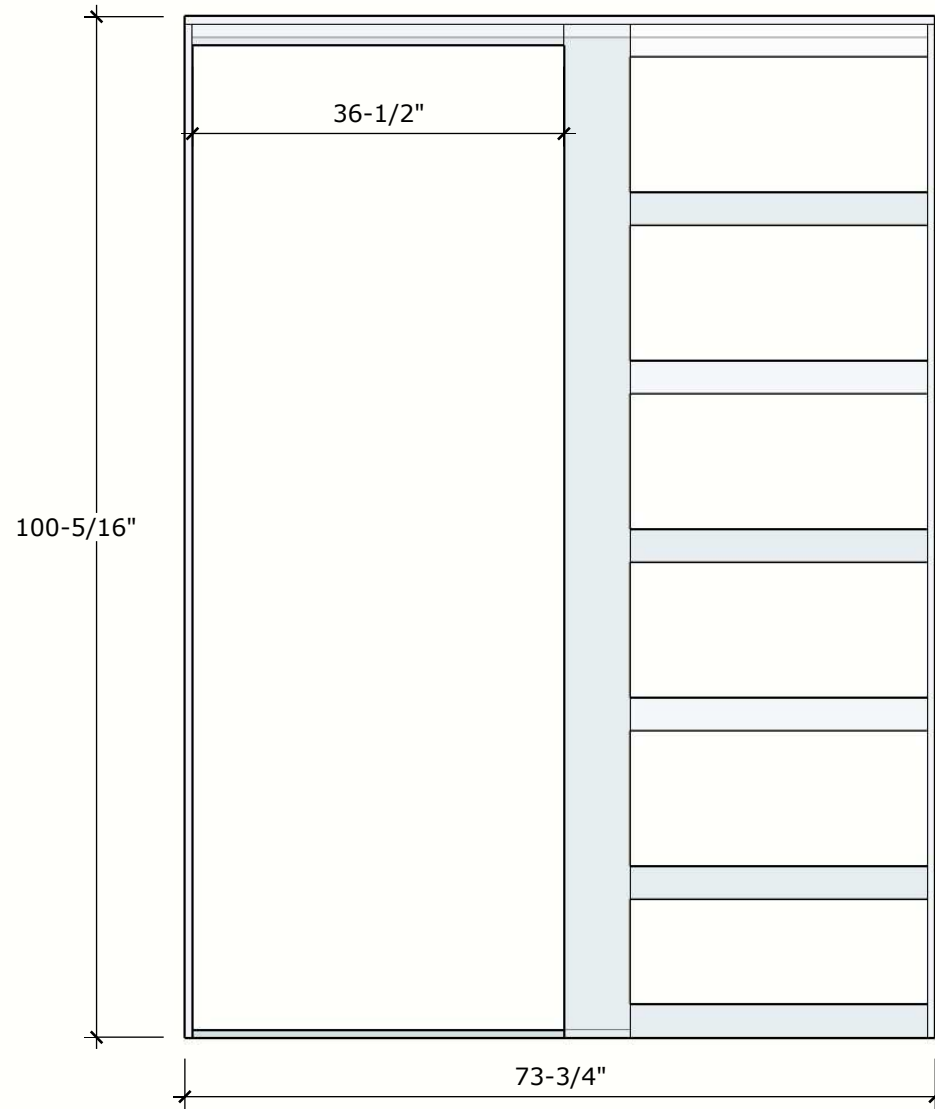


DRAWN BY: KK
DATE: 4/25/22

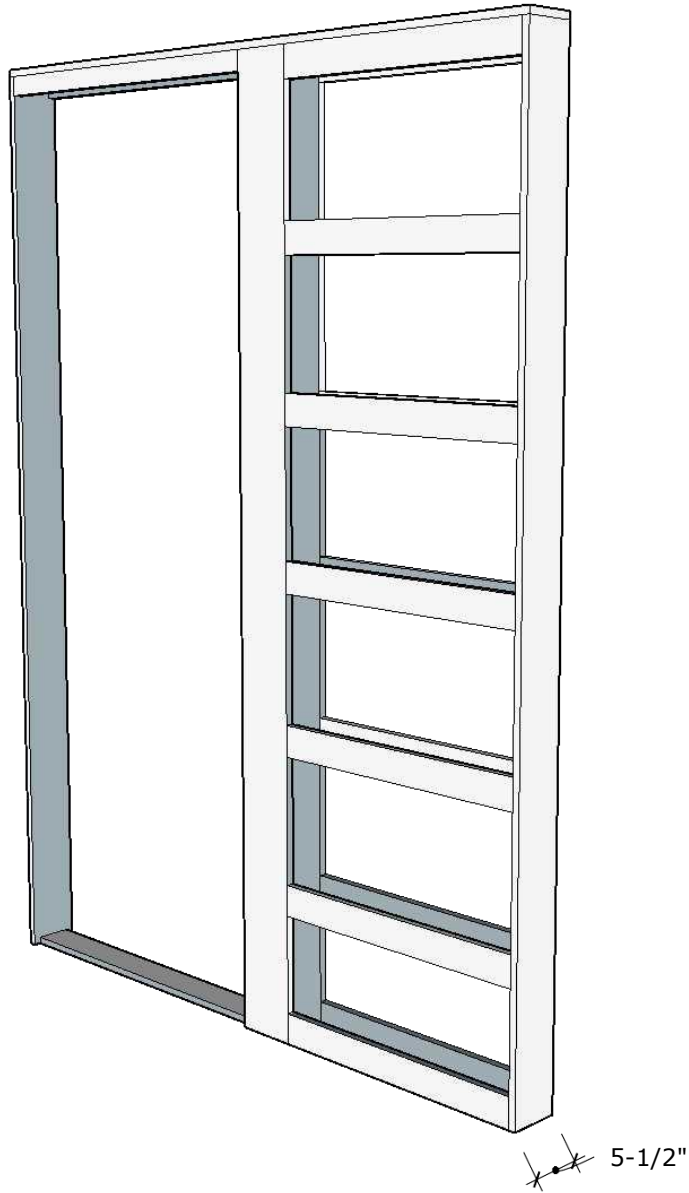


3'-0" X 8'-0" X 1-3/4" - 5-1/2" WALL
WITH POCKET DOOR STILE DOOR - 1" LARGER STILE

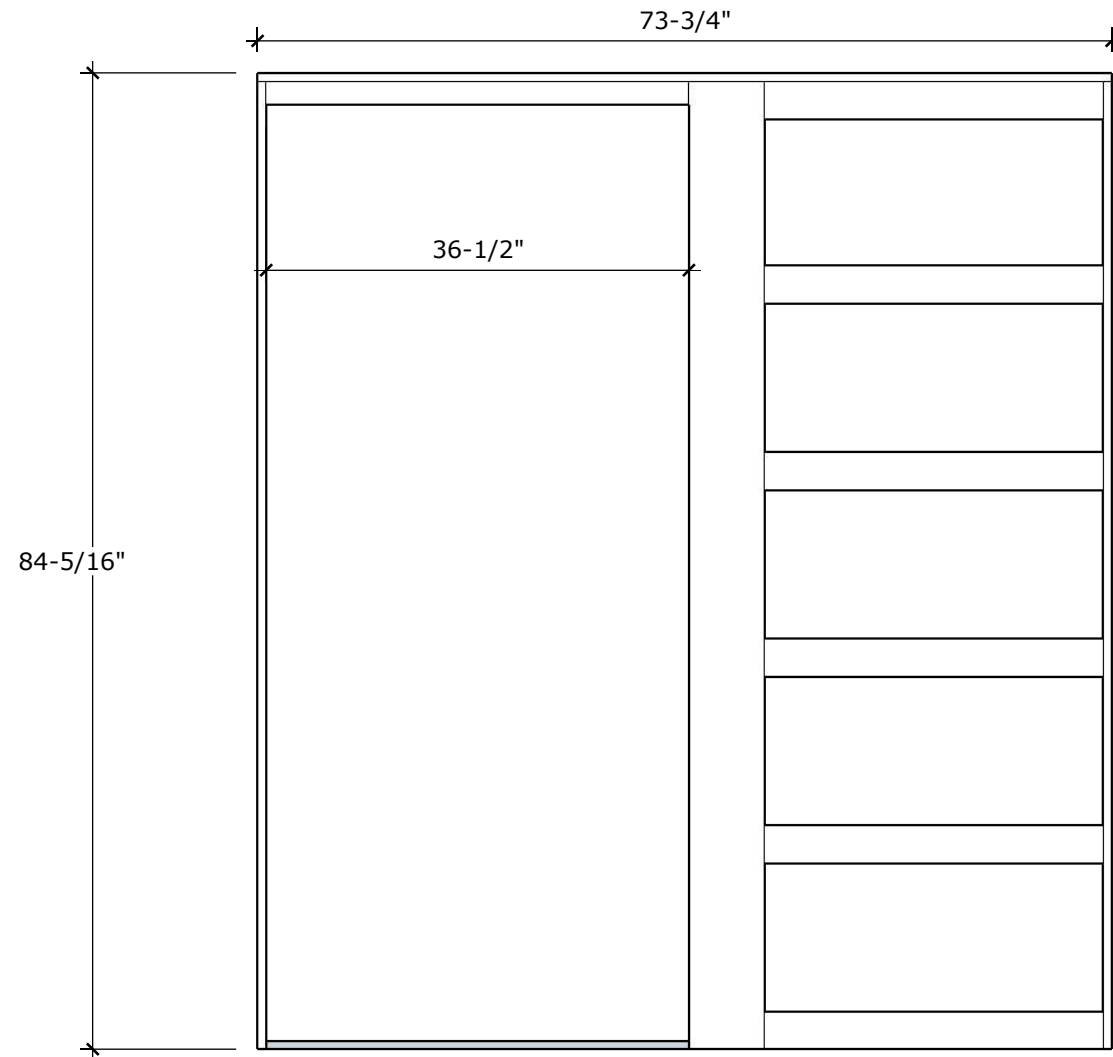
3'-0" x 8'-0"
5-1/2" WALL



DRAWN BY: KK
DATE: 4/25/22



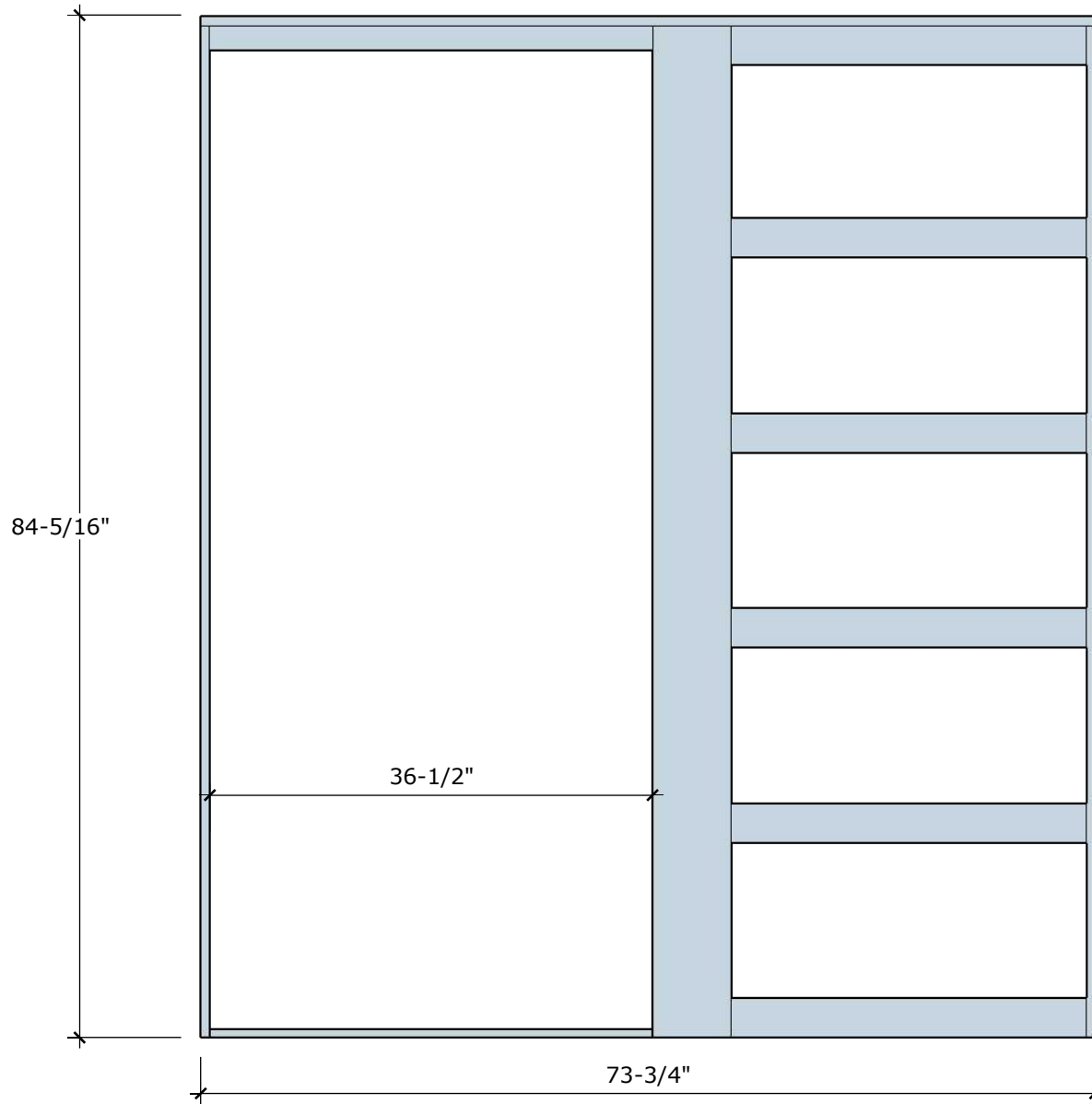
DRAWN BY: KK
DATE: 4/25/22



DRAWN BY: KK
DATE: 4/25/22



DRAWN BY: KK
DATE: 4/25/22

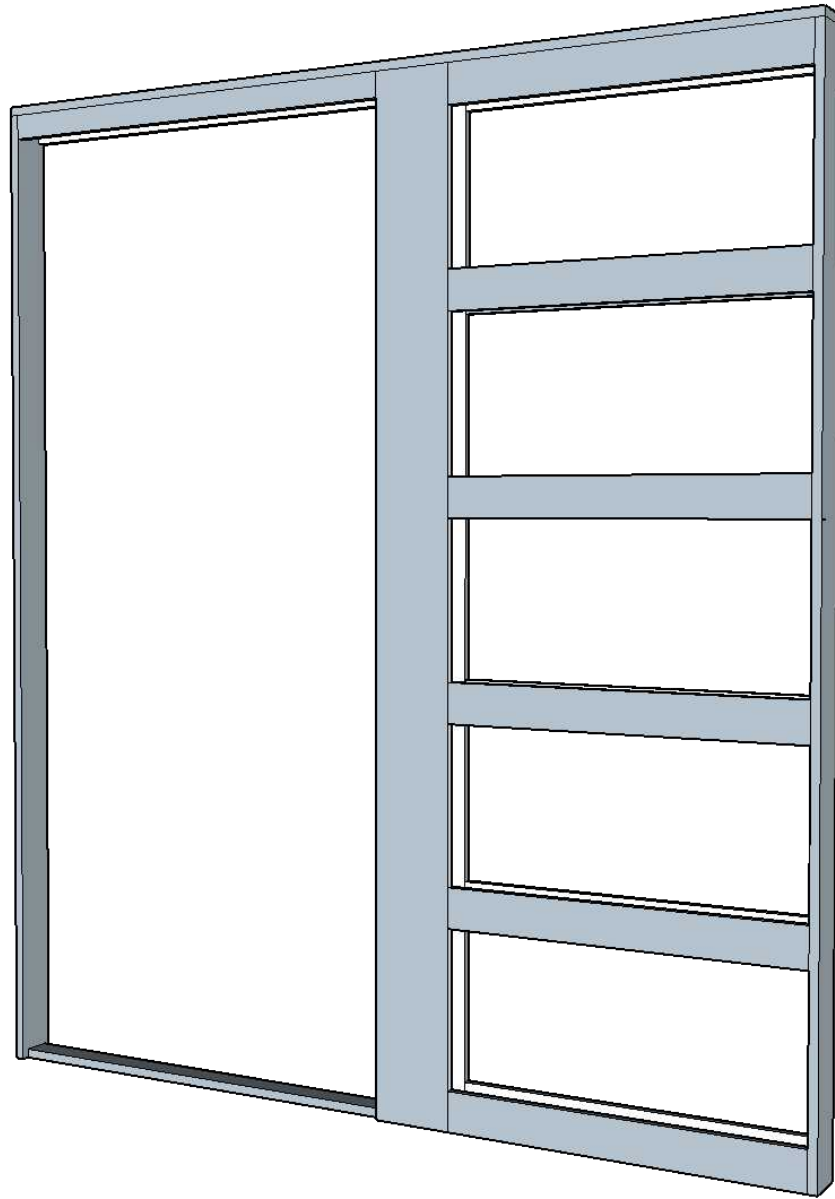


DRAWN BY: KK
DATE: 4/25/22



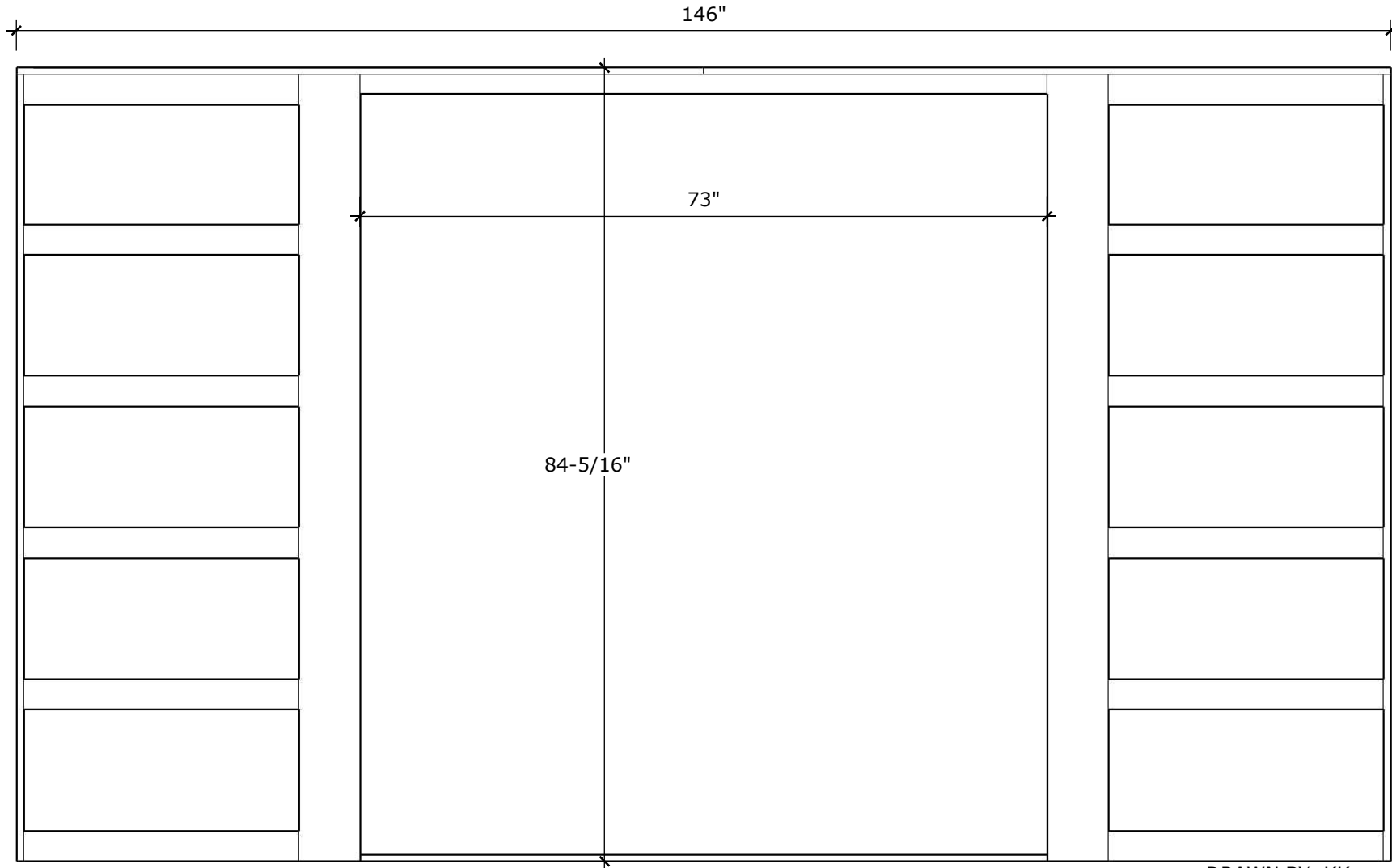
3'-0" X 6'-8" X 1-3/4" - 3-1/2" WALL

3'-0" x 6'-8"
3-1/2" WALL



DRAWN BY: KK
DATE: 4/25/22

3-1/2"

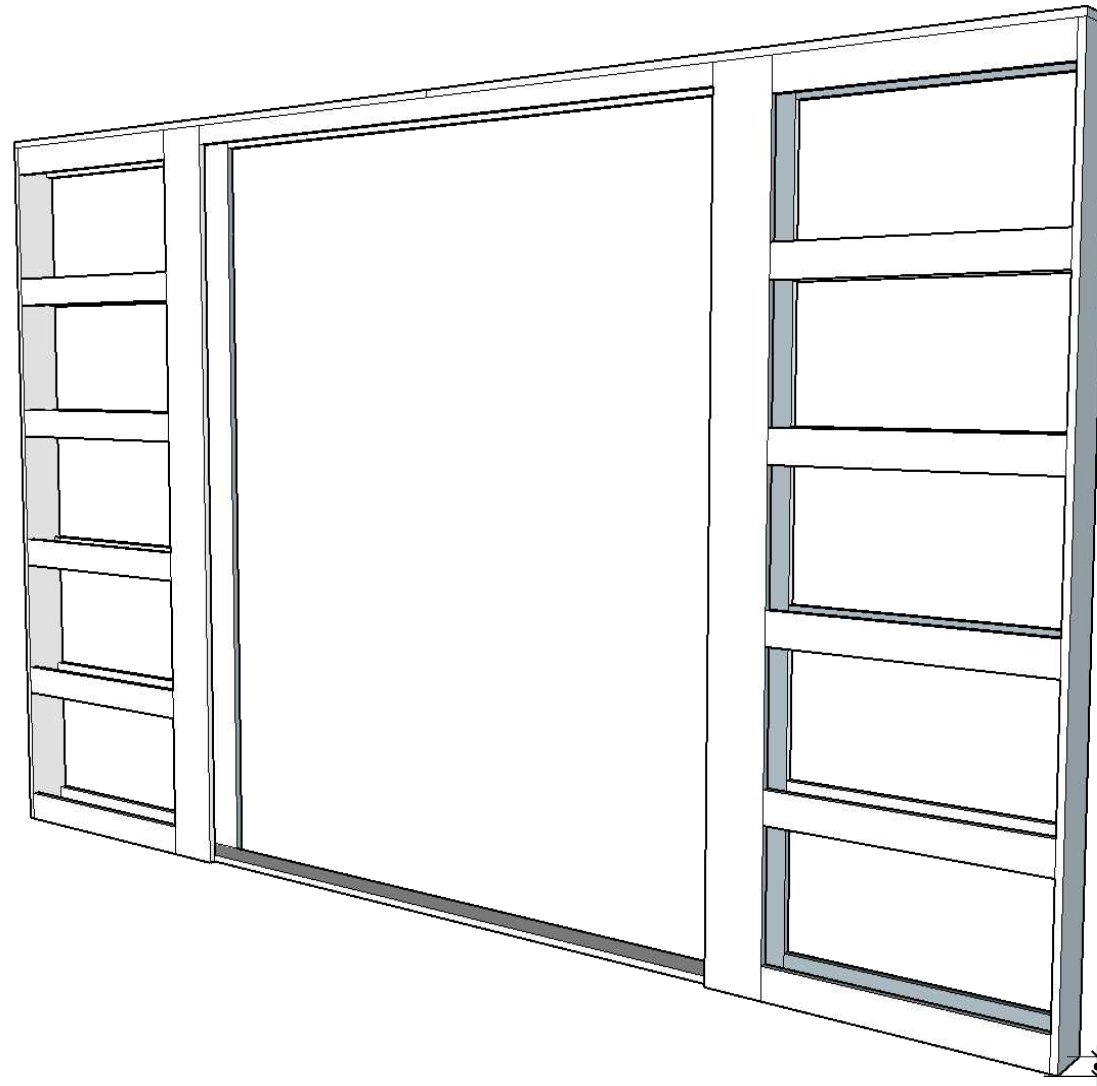


DRAWN BY: KK
DATE: 4/25/22



3'-0" X 6'-8" X 1-3/4" - 5-1/2" WALL
DOUBLE POCKET DOOR

3'-0" x 6'-8"
DOUBLE
5-1/2" WALL

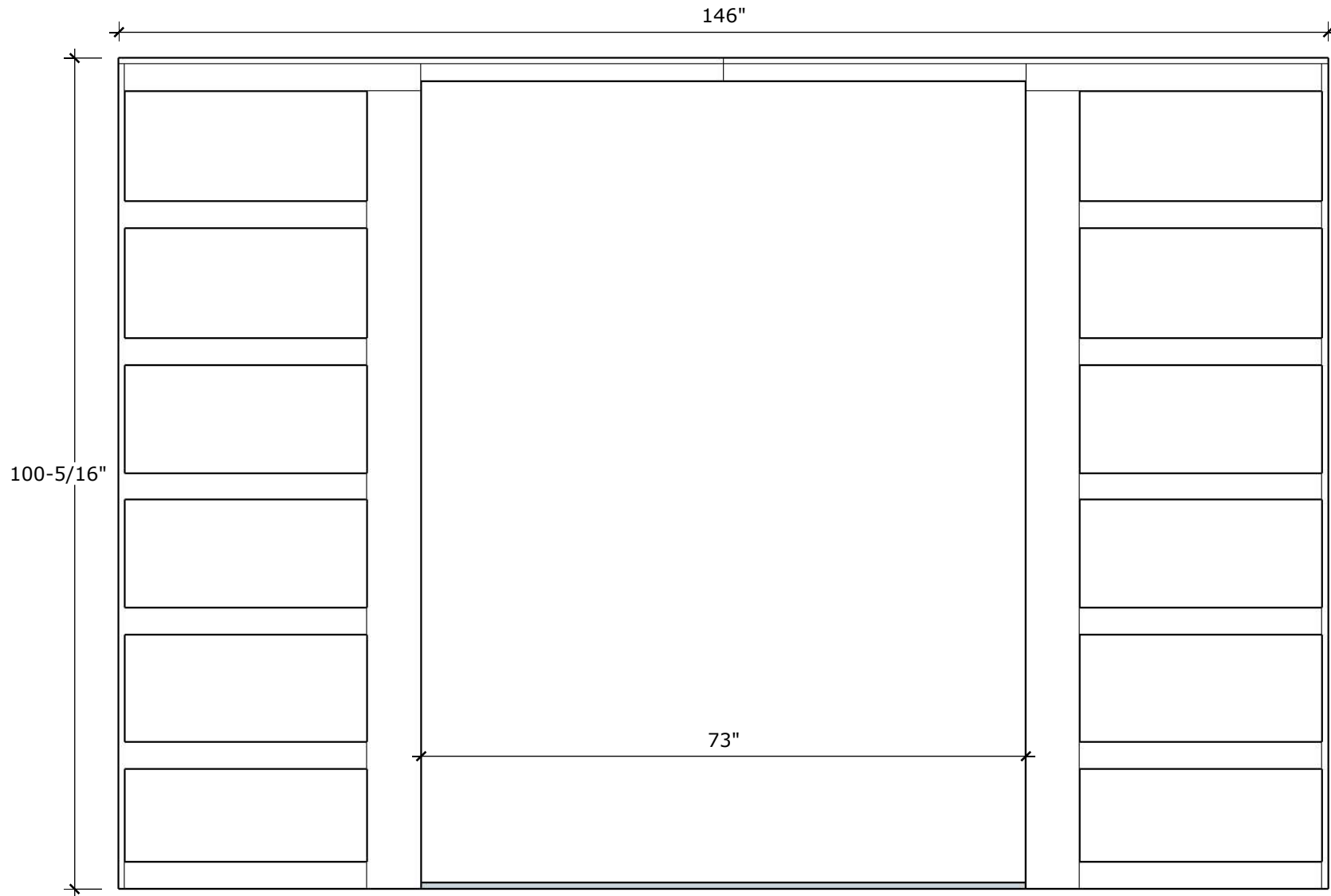


DRAWN BY: KK DATE:
4/25/22
5-1/2"



3'-0" X 6'-8" X 1-3/4" - 5-1/2" WALL
DOUBLE POCKET DOOR

3'-0" x 6'-8"
DOUBLE
5-1/2" WALL

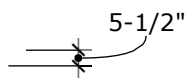
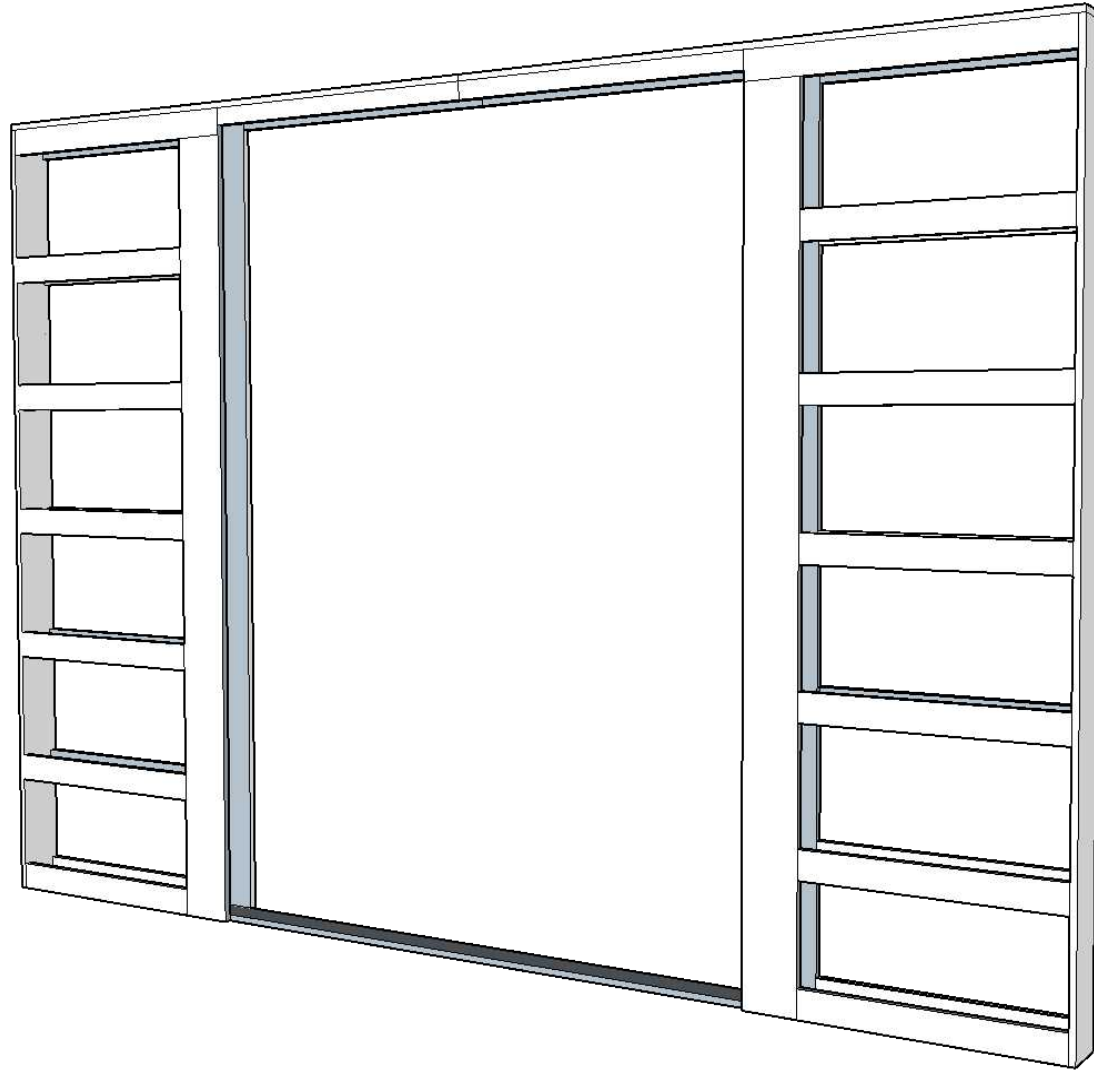


DRAWN BY: KK
DATE: 4/25/22



3'-0" X 8'-0" X 1-3/4" - 5-1/2" WALL
DOUBLE POCKET DOOR

3'-0" x 8'-0"
DOUBLE
5-1/2" WALL



5-1/2" DRAWN BY: KK
DATE: 4/25/22



3'-0" X 8'-0" X 1-3/4" - 5-1/2" WALL
DOUBLE POCKET DOOR

3'-0" x 8'-0"
DOUBLE
5-1/2" WALL